

ENH050QA1-450 5.0" QVGA Analog AMLCD Display

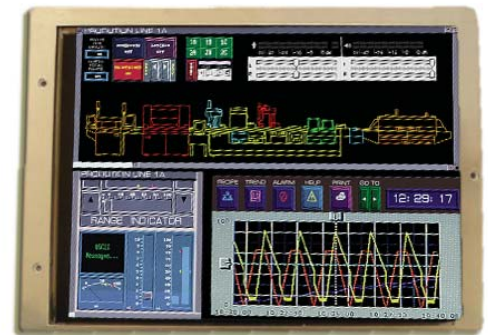
Enhanced Brightness for Outdoor Viewability

Overview

The ENH050QA1-450 color TFT LCD provides improved optical performance based on enhancement of a standard Sharp LQ5AW136 color active matrix LCD module. The incorporation of high efficiency optical films provides an increase of approximately 40% over the typical luminance of the stock display. The ENH050QA1-450 is available in two surface treatments – IM/Clear (glossy) or IM/110 (a 10% diffusion).

The enhanced module accepts full color video signal conforming to the NTSC(M) and PAL(B-G) system standards. The TFT LCD panel used for this module is a low-reflection and high color saturation type. Viewing angle is 6 o'clock direction. The module offers a wide viewing angle and high brightness (450 cd/m² typical). The backlight-driving DC/AC inverter is not built into this module.

WEDC's ENH050QA1-450 meets the environmental specifications of the stock Sharp LQ5AW136. WEDC provides a full one year warranty to the enhanced performance product.



Performance Features

- QVGA 320(H) x 234(V) Resolution
- 450 nit typical Luminance
- Analog RGB Interface
- Dual Mode NTSC and PAL(B-G)
- High Contrast Ratio/High Aperture Ratio

Applications

- Portable Instrumentation
- GPS Systems
- Navigation Products
- Automotive

Surface Treatments

- 450 nit – Diffuse front surface, IM/110
- 450 nit – Glossy front surface, IM/Clear

Display Characteristics

Display Format:	320 Pixels (H) x 234 Pixels (V)
Active Viewing Area:	102.2mm (H) x 74.8mm (V)
Pixel Configuration:	RGB Vertical Stripe
Pixel Pitch:	0.3195mm (H) x 0.3195mm (V)
Display Mode:	Normally White

Viewing Angle

Typical:	65/65/40/65	CR > 5
----------	-------------	--------

Luminance

Typical:	450 cd/m ²
----------	-----------------------

Response Time

Typical:	Rise 30ms / Fall 50ms
----------	-----------------------

Operating Temperature

T _{OPa}	-30 °C to +60 °C (Ambient)
T _{OPP}	-30 °C to +85 °C (Panel Surface)

Storage Temperature

T _{stg}	-30°C to +85°C
------------------	----------------

For more information, visit our website at www.whiteedc.com or call 503.690.2460.

Backlight Specification

The backlight system is an edge-lighting type with 1 CCFLs (Cold Cathode Fluorescent Lamp). The characteristics of the lamp are shown in the following table. The values below are for one CCFL.

Parameter	Symbol	Min.	Typ.	Max	Unit	Remark
Lamp voltage	V_L	550	610	670		$I_L = 6.5\text{mA}$
Lamp current	I_L	3.0	6.5	7.0	mArms	
Lamp Frequency	F_L	20	-	70	kHz	
Kick-off Voltage	V_S	-	-	1450	Vrms	TA = 25°C
		-	-	1500	Vrms	TA = 0°C
Lamp Life Time	L_L	10,000	-	-	Hour	TA = 25°C

Absolute Maximum Ratings

Parameter	Symbol	Min	Max	Unit	Remark
Positive power supply voltage	V_{SH}	-0.3	+9.0	V	
Negative power supply voltage	V_{SL}	-6.0	+0.3	V	
Analog input signals	V_I	-	2.0	Vp-p	Note 1
Digital input/output signals	V_I	-0.3	+5.4	V	Note 2
DC bias voltage of common electrode driving signal	T_{CDC}	V_{SL}	V_{SH}	V	
Storage Temperature	T_{stg}	-	-30 ~ +85	°C	Note 3
Operating Temperature (Panel)	T_{opa}	-	-30 ~ +85	°C	
Operating Temperature (Ambient)	T_{opa}	-	-30 ~ +60	°C	

Note 1: VBS, VR1 VG1, VB1, VR2, VG2, VB2 terminals (video signal).

Note 2: NTP, HRV, VRV, SAM, VSW, SHY, CLKC, CLK terminals.

Note 3: The temperature of all parts in module should exceed this rating.

Maximum wet-bulb temperature should be less than 58°C, non-condensing.

Power Consumption

Part Number	Symbol	Condition	Min	Typ.	Max	Unit	Remark
Positive supply current	I_{SH}	$V_{SH} = +8.0\text{V}$	-	140	170	mA	
Negative supply current	I_{SL}	$V_{SL} = -5.0\text{V}$	-	55	70	mA	
Total	W_S		-	1.4	1.7	W	
Lamp power consumption	W_L			4.0		W	

Ordering Information

Part Number	Model	Description
100-0005-00	ENH050QA1-450	450 nit – Glossy front surface, IM/Clear
100-0005-01		450 nit – Diffuse front surface IM/110
100-0005-02		450 nit – No front surface treatment

For ordering or additional information on this or any other display product or service, contact

White Electronic Designs at:

Display Systems Division
21333 NW Jacobson Road
Hillsboro, OR 97124

Tel: 503.690.2460 Fax: 503.690.2490

www.whiteedc.com



WHITE ELECTRONIC DESIGNS